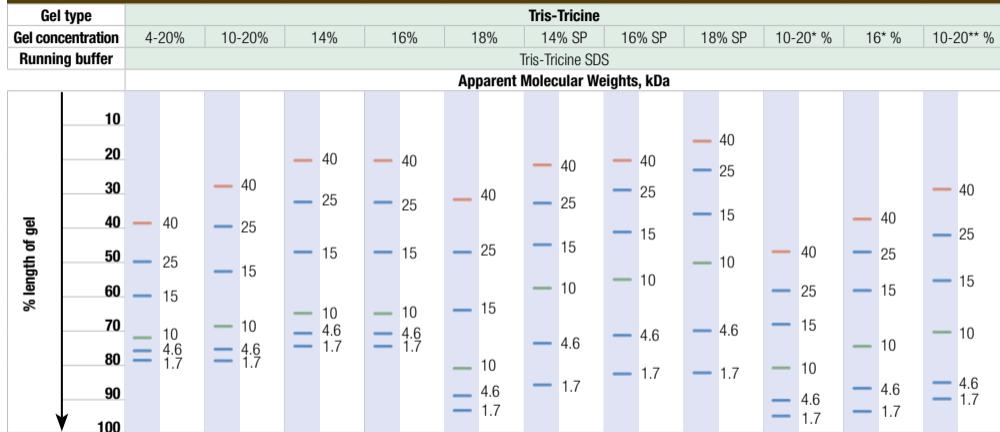


Migration patterns of Spectra™ Multicolor Low Range Protein Ladder in different electrophoresis conditions



SP – small peptide SDS-polyacrylamide gel with higher degree of crosslinking (c=5% instead of usual ~3%).

***** – migration patterns were determined using respective Novex® precast gels.

****** – migration patterns were determined using respective Ready Gel® precast gel.

Note. The apparent molecular weight of each protein (kDa) has been determined by calibration against an unstained protein ladder in specific electrophoresis conditions.