



CERTIFICATE OF ANALYSIS

NoLimitsTM 200bp DNA Fragment

#SM1611 10µg

Lot:

DNA fragment size: 200 bp
Concentration: 0.5µg/µl

Supplied in Storage Buffer (TE buffer): 10mM Tris-HCl (pH 7.6), 1mM EDTA).

Store at -20°C.



Description

The NoLimitsTM DNA Fragment is a chromatography-purified, exceptionally pure individual DNA fragment. It is produced using specifically designed plasmid DNA purified by a proprietary patent-pending technology. Plasmid DNA is digested with PureExtremeTM restriction endonucleases and the individual DNA fragment is chromatography-purified from the digestion mixture. The NoLimitsTM DNA Fragment is suitable for gel and capillary electrophoresis, DNA quantification, HPLC analysis and other applications that require high purity and custom composition of DNA standards. Convenient concentration of NoLimitsTM DNA Fragments allows mixing of several individual fragments to produce a custom ladder of required range and composition.

Quality Control Assay Data

A well-defined band is formed during gel electrophoresis (*see Fig. 1*).

A sharp peak is obtained in capillary electrophoresis on an Agilent 2100 Bioanalyzer (*see Fig. 2*).

The DNA concentration is determined spectrophotometrically. The absence of nucleases is confirmed by a direct nuclease activity test.

Quality authorized by:

A handwritten signature in black ink, appearing to read "J. Zilinskiene".

Jurgita Zilinskiene

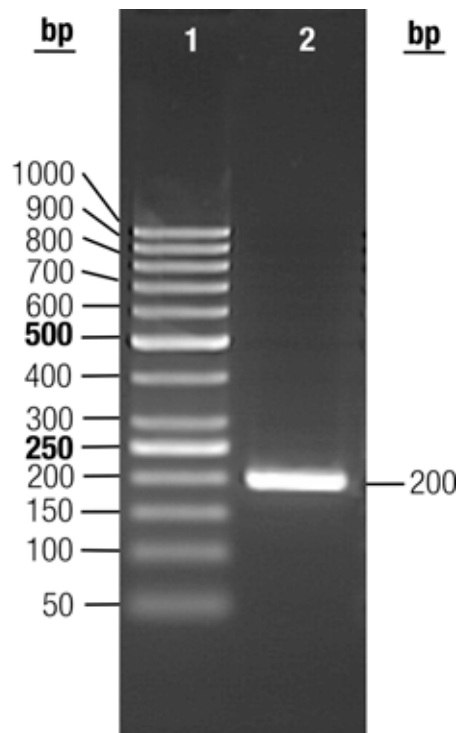


Fig.1. Analysis on agarose gel.

2%TopVision™ LE GQ Agarose (#R0491), 1X TBE, 7V/cm, 60min

1 – GeneRuler™ 50bp DNA Ladder (#SM0371) – 0.5µg

2 – NoLimits™ 200 bp DNA Fragment – 0.5µg

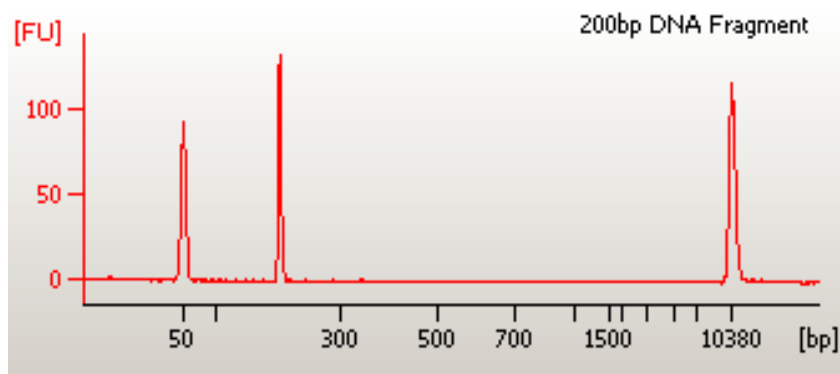


Fig.2. Analysis on Agilent Bioanalyzer 2100 and DNA 7500 LabChip® Kit

Collection of NoLimits™ DNA Fragments

| DNA fragment size | Catalog # | Amount, µg | DNA fragment size | Catalog # | Amount, µg |
|-------------------|-----------|------------|-------------------|-----------|------------|
| 10 bp | SM1391 | 10 | 850 bp | SM1661 | 10 |
| 15 bp | SM1381 | 10 | 900 bp | SM1491 | 10 |
| 20 bp | SM1401 | 10 | 1000 bp | SM1671 | 10 |
| 25 bp | SM1761 | 10 | 1200 bp | SM1681 | 10 |
| 35 bp | SM1411 | 10 | 1500 bp | SM1691 | 10 |
| 50 bp | SM1421 | 10 | 2000 bp | SM1701 | 10 |
| 75 bp | SM1431 | 10 | 2500 bp | SM1571 | 10 |
| 100 bp | SM1441 | 10 | 3000 bp | SM1711 | 10 |
| 150 bp | SM1601 | 10 | 3500 bp | SM1501 | 10 |
| 200 bp | SM1611 | 10 | 4000 bp | SM1721 | 10 |
| 250 bp | SM1451 | 10 | 5000 bp | SM1731 | 10 |
| 300 bp | SM1621 | 10 | 6000 bp | SM1511 | 10 |
| 400 bp | SM1631 | 10 | 7000 bp | SM1741 | 10 |
| 500 bp | SM1641 | 10 | 8000 bp | SM1521 | 10 |
| 600 bp | SM1461 | 10 | 10000 bp | SM1751 | 10 |
| 700 bp | SM1651 | 10 | 15000 bp | SM1531 | 10 |
| 750 bp | SM1471 | 10 | 17000 bp | SM1771 | 10 |
| 800 bp | SM1481 | 10 | 20000 bp | SM1541 | 10 |

See www.fermentas.com for new additions to the collection.

Visit www.fermentas.com for ordering the NoLimits™ Custom DNA Ladder Service, bulk quantities and custom formulations

PRODUCT USE LIMITATION.

This product is developed, designed and sold exclusively for research purposes and in vitro use only. The product was not tested for use in diagnostics or for drug development, nor is it suitable for administration to humans or animals.

Please refer to www.fermentas.com for Material Safety Data Sheet of the product.