



## CERTIFICATE OF ANALYSIS

# NoLimits<sup>TM</sup> 2500bp DNA Fragment

#SM1571      10µg

### Lot:

DNA fragment size: 2500 bp  
Concentration: 0.5µg/µl

Supplied in Storage Buffer (TE buffer): 10mM Tris-HCl  
(pH 7.6), 1mM EDTA).

**Store at -20°C.**

## Description

The NoLimits<sup>TM</sup> DNA Fragment is a chromatography-purified, exceptionally pure individual DNA fragment. It is produced using specifically designed plasmid DNA purified by a proprietary patent-pending technology. Plasmid DNA is digested with PureExtreme<sup>TM</sup> restriction endonucleases and the individual DNA fragment is chromatography-purified from the digestion mixture. The NoLimits<sup>TM</sup> DNA Fragment is suitable for gel and capillary electrophoresis, DNA quantification, HPLC analysis and other applications that require high purity and custom composition of DNA standards. Convenient concentration of NoLimits<sup>TM</sup> DNA Fragments allows mixing of several individual fragments to produce a custom ladder of required range and composition.

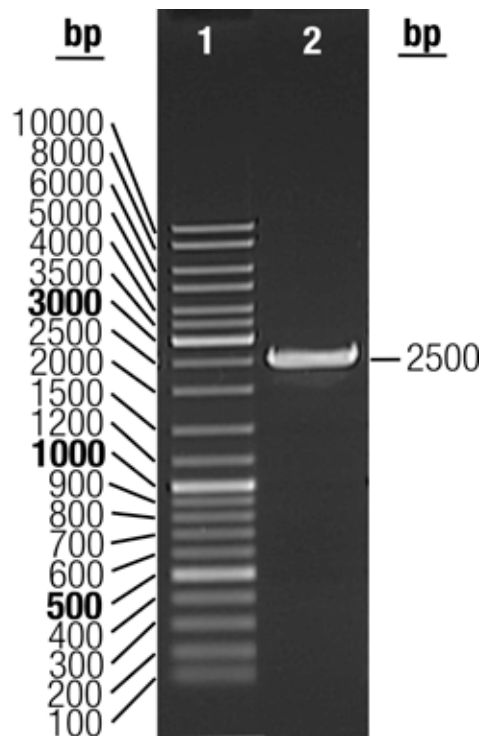
## Quality Control Assay Data

A well-defined band is formed during gel electrophoresis (*see Fig. 1*).  
A sharp peak is obtained in capillary electrophoresis on an Agilent 2100 Bioanalyzer (*see Fig. 2*).  
The DNA concentration is determined spectrophotometrically.  
The absence of nucleases is confirmed by a direct nuclease activity test.

Quality authorized by:

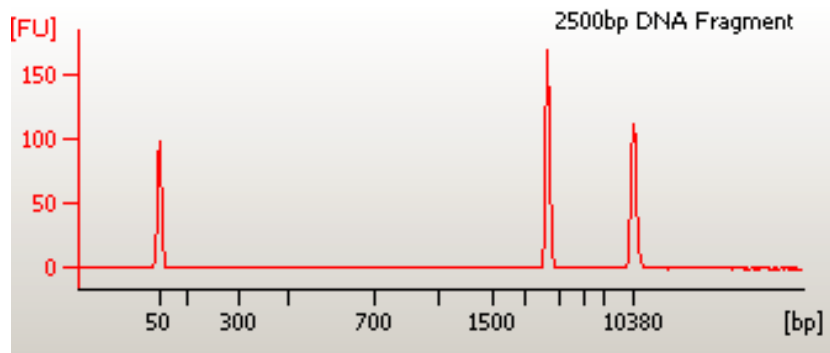
A handwritten signature in black ink, appearing to read "JZ", written over a white background.

Jurgita Zilinskiene



**Fig. 1. Analysis on agarose gel.**

1% TopVision™ LE GQ Agarose (#R0491), 1X TAE, 7V/cm, 40min  
 1 – GeneRuler™ DNA Ladder Mix (#SM0331) – 0.5µg  
 2 – NoLimits™ 2500 bp DNA Fragment – 0.5µg



**Fig.2. Analysis on Agilent Bioanalyzer 2100, DNA 7500 LabChip® Kit**

## Collection of NoLimits™ DNA Fragments

DNA fragment size	Catalog #	Amount, µg	DNA fragment size	Catalog #	Amount, µg
10 bp	SM1391	10	850 bp	SM1661	10
15 bp	SM1381	10	900 bp	SM1491	10
20 bp	SM1401	10	1000 bp	SM1671	10
25 bp	SM1761	10	1200 bp	SM1681	10
35 bp	SM1411	10	1500 bp	SM1691	10
50 bp	SM1421	10	2000 bp	SM1701	10
75 bp	SM1431	10	2500 bp	SM1571	10
100 bp	SM1441	10	3000 bp	SM1711	10
150 bp	SM1601	10	3500 bp	SM1501	10
200 bp	SM1611	10	4000 bp	SM1721	10
250 bp	SM1451	10	5000 bp	SM1731	10
300 bp	SM1621	10	6000 bp	SM1511	10
400 bp	SM1631	10	7000 bp	SM1741	10
500 bp	SM1641	10	8000 bp	SM1521	10
600 bp	SM1461	10	10000 bp	SM1751	10
700 bp	SM1651	10	15000 bp	SM1531	10
750 bp	SM1471	10	17000 bp	SM1771	10
800 bp	SM1481	10	20000 bp	SM1541	10

See [www.fermentas.com](http://www.fermentas.com) for new additions to the collection.

Visit [www.fermentas.com](http://www.fermentas.com) for ordering the NoLimits™ Custom DNA Ladder Service, bulk quantities and custom formulations

### PRODUCT USE LIMITATION.

This product is developed, designed and sold exclusively for research purposes and in vitro use only. The product was not tested for use in diagnostics or for drug development, nor is it suitable for administration to humans or animals.

Please refer to [www.fermentas.com](http://www.fermentas.com) for Material Safety Data Sheet of the product.