

For improved performance
dye concentrations were changed

CERTIFICATE OF ANALYSIS

Lambda DNA/EcoRI Marker, 1

#SM0281 250(5x50) μ g

Lot:

Concentration: 0.5 μ g/ μ l
Supplied with: 2x1ml 6X Loading Dye Solution

Store at -20°C.

2

In total 7 vials.

Description

Lambda DNA was completely digested with EcoRI, purified and dissolved in storage buffer. The DNA Marker contains the following 6 discrete fragments (in base pairs): 21226*, 7421, 5804, 5643, 4878, 3530*.

Storage Buffer

10mM Tris-HCl (pH7.6), 1mM EDTA.

6X Loading Dye Solution

10mM Tris-HCl (pH 7.6), 0.03% bromophenol blue, 0.03% xylene cyanol FF, 60% glycerol and 60mM EDTA.

Quality Control Assay Data

Analysis of 0.5 μ g (1 μ l) of the DNA Marker on agarose gel by ethidium bromide staining generates 6 discrete bands pattern.

Quality authorized by:



Jurgita Zilinskiene

RECOMMENDATIONS FOR USE

- Vortex gently just prior to use.
- Prepare the DNA Marker before loading:
1 μ l (0.5 μ g) of the DNA Marker;
1 μ l of 6X Loading Dye Solution;
4 μ l of deionized water.
- Heat for 5min at 65°C and then cool on ice for 3min (*see Note*).
- Apply the prepared amount (6 μ l) of the DNA Marker on a 5mm lane of agarose gel.
- Following electrophoretic separation on gel, visualize the DNA bands by ethidium bromide staining.

Note

- One vial (50 μ g) is sufficient for ~100 applications.
- Use 0.1 μ g (0.2 μ l) of the DNA Marker (before dilution) per 1mm of an agarose gel lane width.
- The cohesive ends of the 12nt *cos* site of bacteriophage lambda from fragments of 21226 bp and 3530 bp (indicated*) may anneal and form an additional band at 24756 bp. These fragments can be separated by heating at 65°C for 5min and then cooling on ice for 3min.

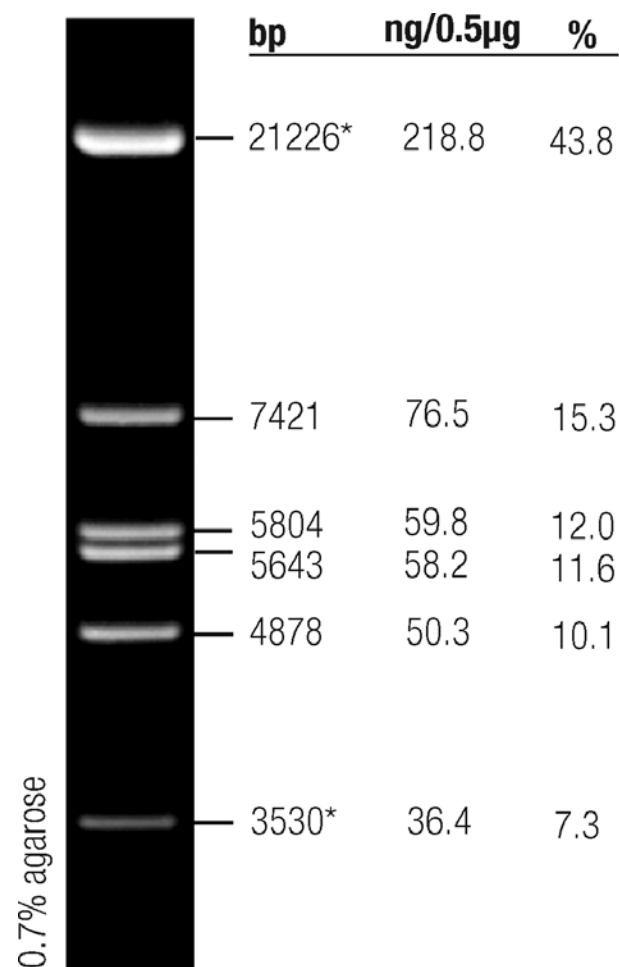
PRODUCT USE LIMITATION.

This product is developed, designed and sold exclusively for research purposes and *in vitro* use only. The product was not tested for use in diagnostics or for drug development, nor is it suitable for administration to humans or animals.

Please refer to www.fermentas.com for Material Safety Data Sheet of the product.

Revised 15.10.2004

Lambda DNA/EcoRI Marker, 1



0.5 μ g of the Marker was run on a 20cm length of 0.7% agarose gel in 1X TAE buffer at 3V/cm 18hrs (until bromophenol blue dye reached the bottom of the gel).