

CERTIFICATE OF ANALYSIS

For improved performance  
dye concentrations were changed

**Lambda DNA/ EcoRI+HindIII  
Marker, 3,  
ready-to-use**

**#SM0193** 250(5x50) $\mu$ g  
(for 500 applications)

**Lot:**

Concentration: 0.1 $\mu$ g/ $\mu$ l

Supplied with: 2x1ml **6X Loading Dye Solution**

**Store: at room temperature or at +4°C for periods  
up to 6 months.**

**For longer periods store at -20°C.**

**Description**

Lambda DNA/EcoRI+HindIII Marker, 3, is premixed with a storage and loading buffer at a total DNA concentration of 0.1 $\mu$ g/ $\mu$ l and can be directly applied onto an agarose gel.

The DNA Marker contains the following 13 discrete fragments (in base pairs): 21226\*, 5148, 4973, 4268, 3530\*, 2027, 1904, 1584, 1375, 947, 831, 564, 125.

**Storage and Loading Buffer**

10mM Tris-HCl (pH 7.6), 10mM EDTA,  
0.005% bromophenol blue, 0.005% xylene cyanol FF  
and 10% glycerol.

**6X Loading Dye Solution**

10mM Tris-HCl (pH 7.6), 0.03% bromophenol blue,  
0.03% xylene cyanol FF, 60% glycerol and 60mM  
EDTA.

**Quality Control Assay Data**

Agarose gel electrophoretic analysis of homogeneity of  
EcoRI+HindIII fragmentation patterns.

Quality authorized by:



Jurgita Zilinskiene

## RECOMMENDATIONS FOR USE

- Vortex gently just prior to use and take 5µl of the DNA Marker.
- Heat for 5min at 65°C and then cool on ice for 3min (see Note).
- Apply 5µl (0.5µg) of the DNA Marker on a 5mm lane of agarose gel.
- Following electrophoretic separation on gel, visualize the DNA bands by ethidium bromide staining.

### Note

- One vial (0.05mg) is sufficient for ~100 applications.
- Use 0.1µg (1µl) of the ready-to-use DNA Marker per 1mm of an agarose gel lane width.
- The cohesive ends of the 12nt *cos* site of bacteriophage lambda from fragments of 21226bp and 3530bp (indicated\*) may anneal and form an additional band at 24756bp. These fragments can be separated by heating at 65°C for 5min and then cooling on ice for 3min.

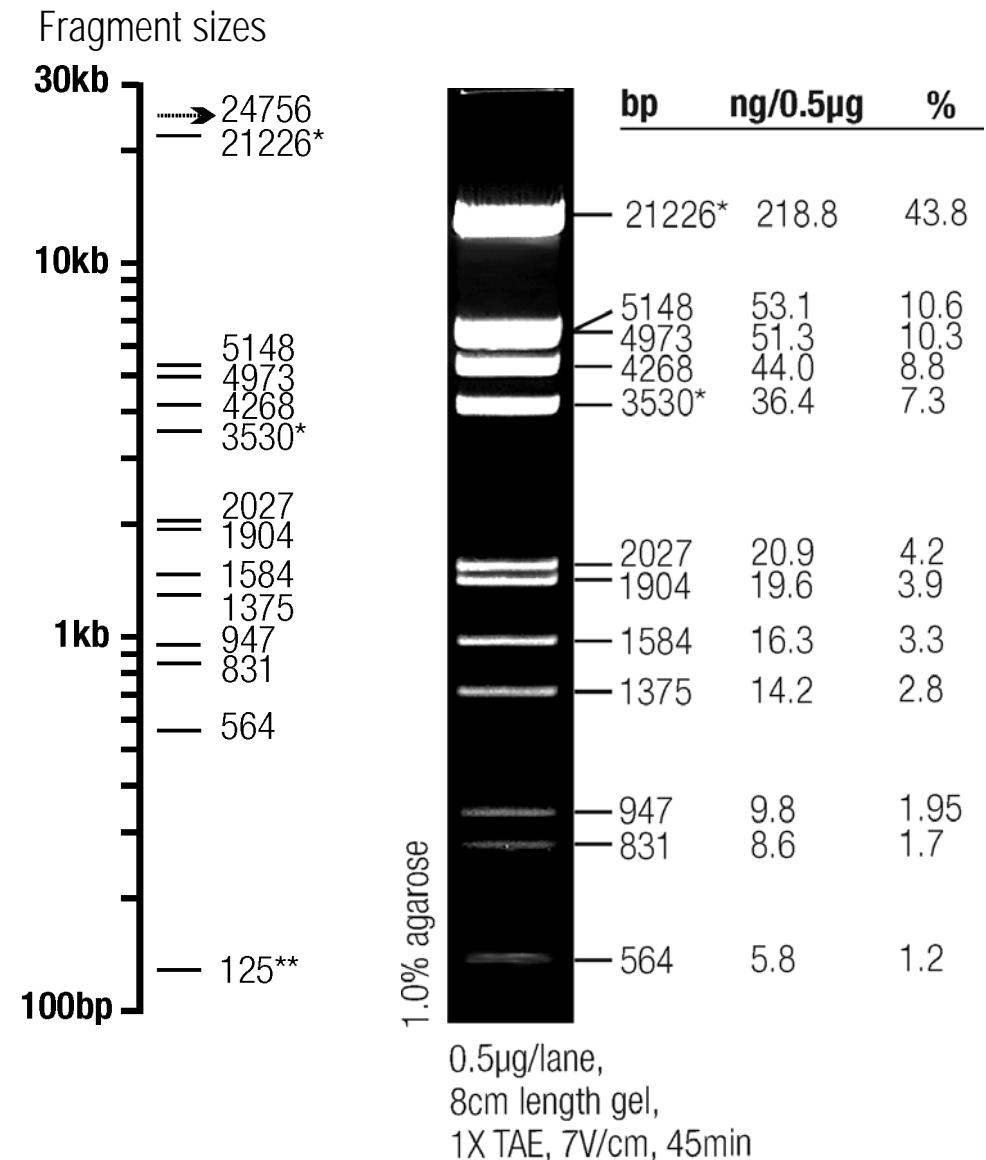
### PRODUCT USE LIMITATION.

This product is developed, designed and sold exclusively *for research purposes and in vitro use only*. The product was not tested for use in diagnostics or for drug development, nor is it suitable for administration to humans or animals.

Please refer to [www.fermentas.com](http://www.fermentas.com) for Material Safety Data Sheet of the product.

Revised 13.01.2005

## Lambda DNA/EcoRI+HindIII Marker, 3, ready-to-use



Fragments indicated\* – see Note above.

The 125\*\* bp fragment is not visible on gel (it makes 0.3%).