

Plasmid DNA Specifications

TEST	METHOD	SPECIFICATION	Research grade	Transfection grade	Pharmaceutical grade
Plasmid DNA concentration	Photometric, 260 nm	1.0-2.0mg/ml	Yes	Yes	Yes
Plasmid DNA purity	Photometric, A_{260nm}/A_{280nm}	1.80-1.98	Yes	Yes	Yes
Content of closed circular supercoiled DNA	1% agarose gel scanning	>80%	N/A	N/A	Yes
Content of genomic <i>E.coli</i> DNA	Real time PCR, Hybridization probes: Flourescein/LC-Red 640, LightCycler, ROCHE	<1%	N/A	N/A	Yes
Content of <i>E.coli</i> RNA	1% agarose gel (EtBr RNA gel staining)	Non detectable on agarose gel	Yes	Yes	Yes
	1% agarose gel (SYBR Green II RNA gel staining)	Non detectable on agarose gel	N/A	Yes	Yes
Content of endotoxins	LAL test	<40EU/mg	N/A	Yes	Yes
Content of <i>E.coli</i> proteins	Immunodetection, sandwich ELISA	<100ng/mg	N/A	Yes	Yes
Identity	Restriction digestion analysis with several RE	Conforms to specified fragment length and conforms to digest of reference plasmid	Yes	Yes	Yes
Bioburden	LB agar plate, 48 hours	0cfu/ml	N/A	N/A	Yes
Fragment sequence	Automated sequencing	Conforms to specified	N/A	N/A	Yes

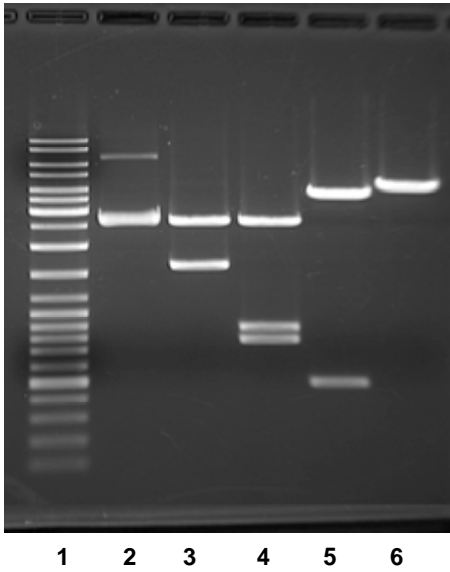


Figure. Restriction analysis of pCLIENT plasmid.

Lane 1 – Fermentas GeneRuler™ DNA Ladder Mix

Lane 2 – 1µg of purified pCLIENT

Lane 3 – DNA/Eco31I, µg/5u, Fermentas Buffer G

Lane 4 – DNA/EcoRI+HindIII, µg/5u of each, Fermentas 2X Tango™ Buffer

Lane 5 – DNA/KpnI+SacI, µg/5u of each, Fermentas Tango™ Buffer

Lane 6 – DNA/CpoI, µg/5u, Fermentas Tango™ Buffer

1 2 3 4 5 6